

Easy to use
gas spring monitoring:
Save time and cut costs!



Wireless Pressure Monitoring (WPM)

for Gas Springs



FIBRO

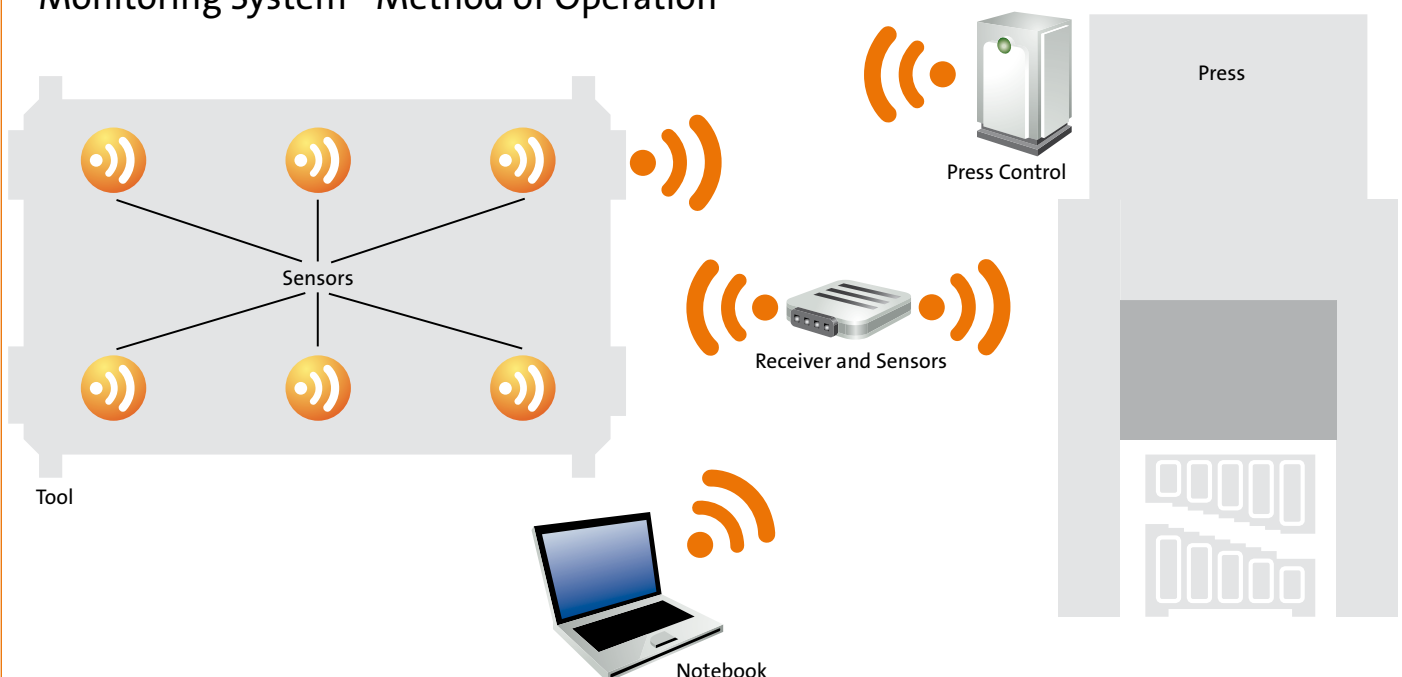
The core requirements on any pressing plant are: Automation and zero-defect production. The prerequisite is real-time process control. The FIBRO Wireless Pressure Monitoring (WPM) system monitors gas springs in all areas in which cable- or tube-reliant systems reach their technical boundaries or are simply uneconomical.

The WPM system monitors temperature and pressure in gas springs. Its coordinator and sensors send their wireless data to any designated Windows-based system. Custom software analyses the data and initialises the necessary process control and pre-emptive maintenance steps accordingly.

Advantages:

- Around-the-clock monitoring and documentation
- Alert to defects avoiding production of faulty parts
- Pre-emptive erosion detection and targeted troubleshooting
- Prevention of downtime and secondary failures
- Minimisation of leakage points
- Streamlined construction and assembly
- Optimised custom maintenance and reduction of maintenance and repair costs

Monitoring System - Method of Operation



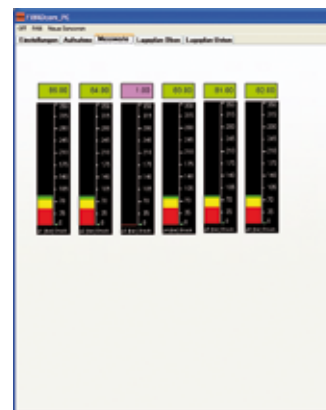
Setting and display options for pressure- and temperature variance



Zero-defect production

Before and during the use of tools in the press, the WPM monitors the level of pressure of all gas springs. The system reports defects pre-emptively before a faulty part can be manufactured. Defineable warning and alarm value limits.

Gas spring location and status control via tool sensors



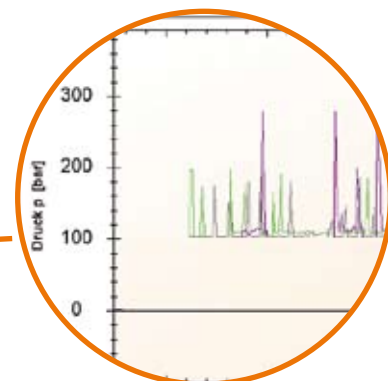
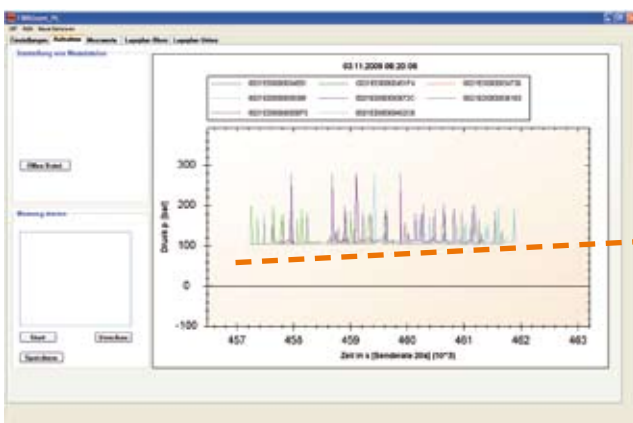
Targeted Maintenance

Temperature monitoring detects erosion before any drop of pressure occurs in the spring. System locates defective spring in case of malfunction. Downtime can be pre-emptively reduced or avoided. The WPM system enables erosion specific maintenance intervals that significantly reduce maintenance and repair compared to fixed intervals.

Streamlined construction and assembly

Tool manufacturers need solely consider the position of sensors and springs. No need to install tube lines during assembly which means leakages are a thing of the past.

Process control documentation (Pressure/Time diagram)





Standard Parts

FIBRO GmbH

DE

Business Area Standard Parts

August-Läpple-Weg

DE-74855 Hassmersheim

Phone +49/6266/73-0

Fax +49/6266/73-237

info@fibro.de

FIBRO France Sarl

FR

19/21, rue Jean Lolive

FR-93170 Bagnole

Téléphone +33/1/43 62 18 81

Télécopieur +33/1/48 59 17 47

info@fibro.fr

FIBRO Inc.

US

139 Harrison Avenue

US-Rockford, IL 61104

Phone +1/815/2 29 13 00

Fax +1/815/2 29 13 03

info@fibroinc.com

FIBRO Asia Pte. Ltd.

SG

121 Genting Lane

2nd Floor

SG-Singapore 349572

Phone +65/68/46 33 03

Fax +65/68/46 33 02

info@fibro-asia.com

FIBRO INDIA STANDARD PARTS PVT. LTD.

IN

Antaral Society, Sanganna Dhotre Marg.

Ganeshkhind Road

IN-Pune - 411 016

Phone +91/20/25 65 62 39

Fax +91/20/25 65 64 87

info@fibro-india.com

www.fibro.com

FIBRO

Art.-Nr. 2.5512.01.0112.01000

01/2012 © Copyright by FIBRO GmbH
Printed in Germany on paper bleached without chlorine