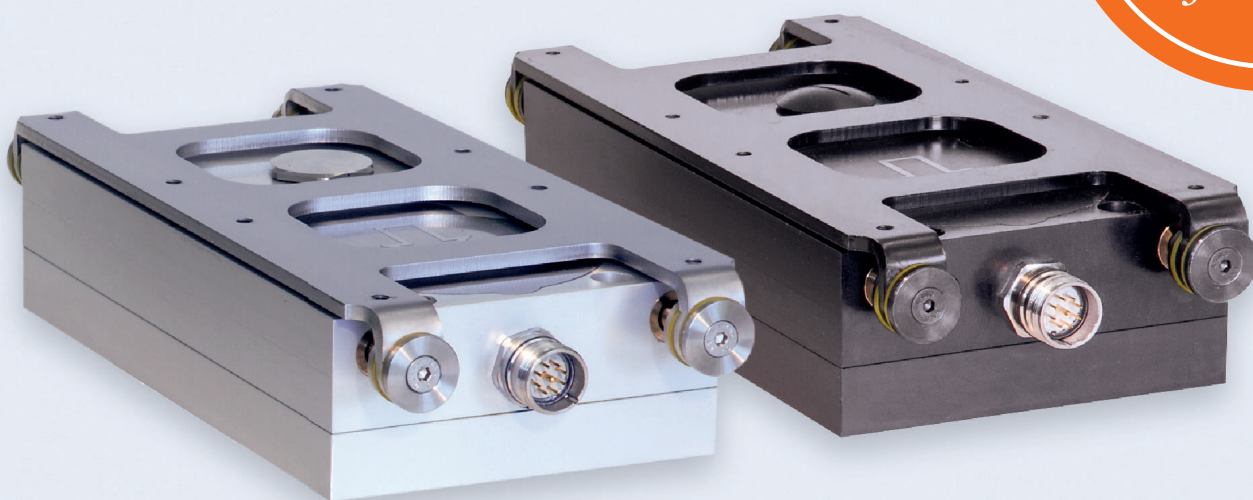


ELECTRIC TRANSPORTER

From April 1,
you get
10% off
your order



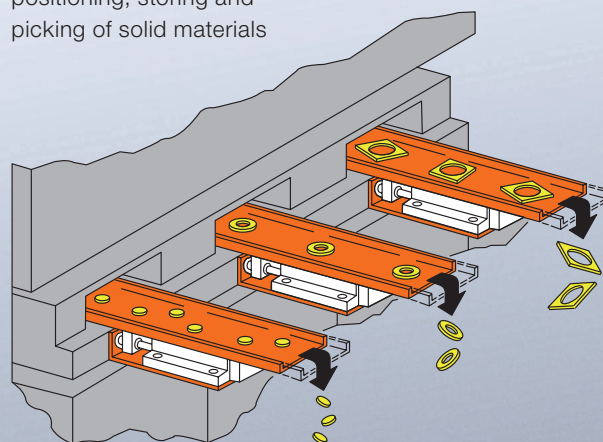
The electrically driven and patented transporter is the optimal product for parts transport, waste disposal and sorting of solid materials such as punched and waste parts in your production.

With low energy consumption, stepless speed control, reduced noise development and no compressed air line, our newly developed electric transporter not only increases your efficiency, but also leads to an improvement in your working environment.

The standard version of the electric transporter (BLACK LINE) is particularly well-suited for the automobile industry and metalworking. Our extension (CLEAN LINE) has been specially developed for hygiene-sensitive areas, such as in the food and pharmaceutical industries, meaning you can also benefit from the advantages of the electric transporter in these applications.

AREAS OF APPLICATION

- Removal of punched and waste parts
- Feeding, separating, sorting, organising, positioning, storing and picking of solid materials

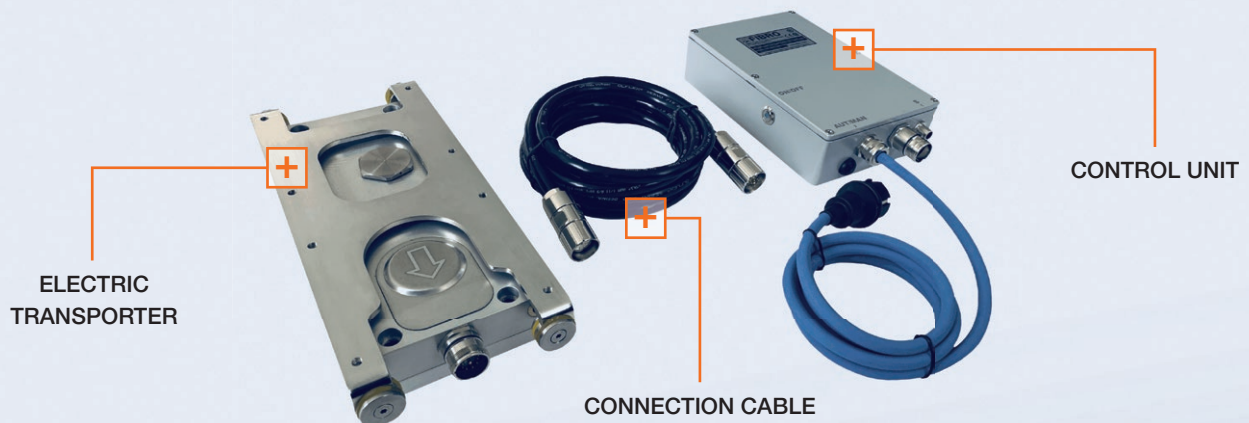


ELECTRIC TRANSPORTER

PRODUCT DETAILS

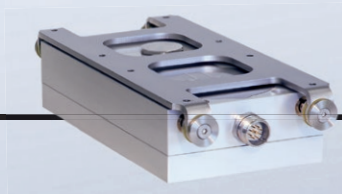
ADVANTAGES

- Low energy consumption**
 Thanks to the electric drive and low internal friction, the transporter consumes much less energy than a comparable compressed air transporter. The sensor-controlled motor ensures that only the energy corresponding to the current load is used.
- Stepless speed control**
 Thanks to the mechanical stepless speed control, the transporter can be precisely adjusted to the medium to be transported.
- Low noise development**
 The integrated mechanical system operating in a closed oil bath only generates 60dB, thereby creating a much better working environment.
- No compressed air necessary**
 Supply of compressed air is no longer necessary due to the electrical operation of the transporter. This reduces your costs and improves the ambient air.
- Low maintenance**
 The transporter is suitable for continuous operation (24/7). Only one external part moves. The integrated ball-bearing mechanical system is designed for high loads and a long service life.
- Simple automation**
 Due to a customisable trough design, solid materials can not only be conveyed with the transporter, but also separated.



CLEAN LINE

Used mainly in hygiene-sensitive areas in the food and pharmaceutical industries



BLACK LINE

Used predominantly in metalworking

